

# INDORE AIRPORT

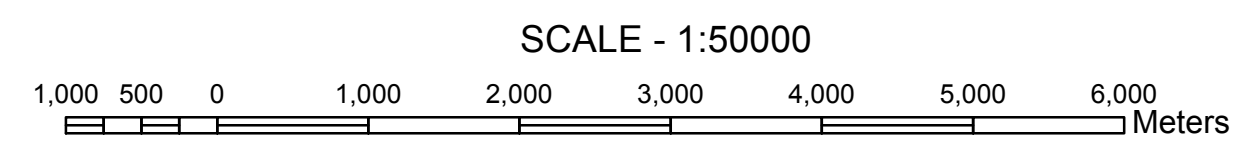
LATITUDE 22° 43' 23.70" N  
 LONGITUDE 075° 48' 19.89" E  
 ARP ELEV. 561.42m (1842 ft)  
 RWY 07/25 2754m x 45m  
 AERODROME ELEV. 564.3 m (1851 ft.)

# LIST OF NAV AIDS

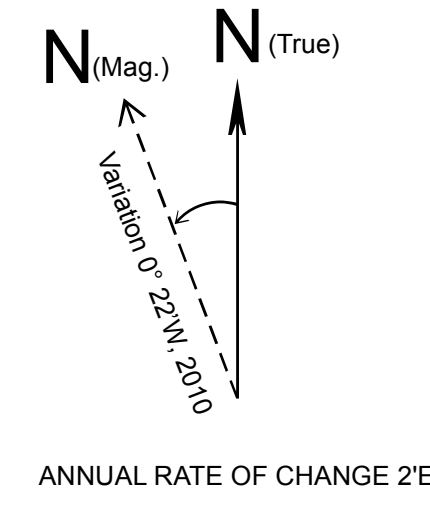
NDB 22° 43' 47.1" N 75° 48' 36.3" E  
 DVOR/DME 22° 42' 38.2" N 75° 46' 46.2" E  
 LLZ 22° 42' 43.7" N 75° 46' 43.3" E  
 GP 22° 43' 29.1" N 75° 48' 35.3" E

**Legend**

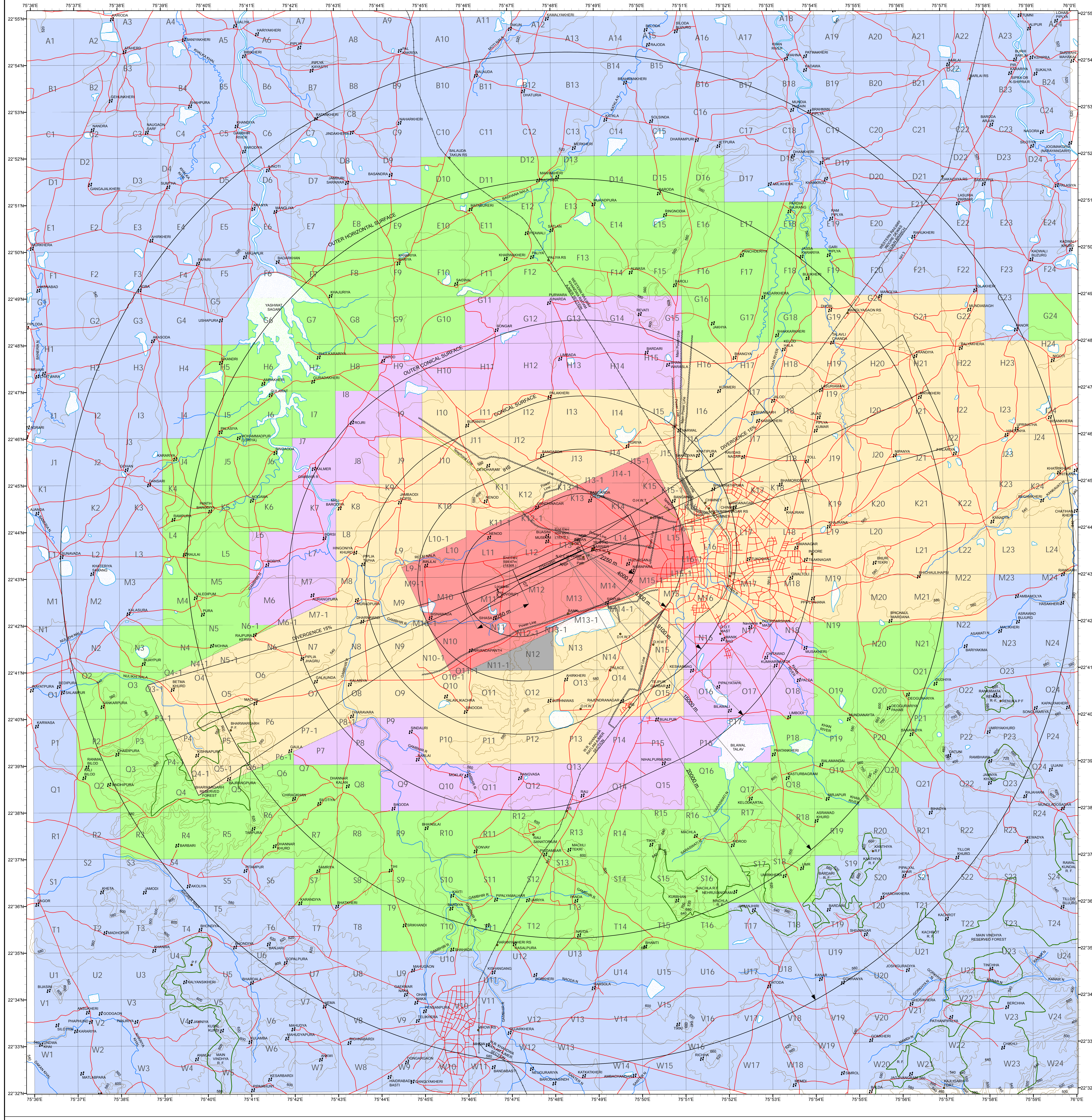
- #: VILLAGE
- : DRAIN
- : POWER LINE
- : CONTOUR
- : ROAD
- : RAILWAY LINE
- : WATER BODIES
- : Reserved Forest



ALL GEOGRAPHICAL COORDINATES ARE IN WGS-84  
 ALL ELEV., CONTOURS, DIMENSIONS ARE IN METRES.



# CCZM OF INDORE AIRPORT



### COLOUR LEGEND

0	NOC TO BE OBTAINED FROM AAI	640	PERMISSIBLE TOP ELEV. 640 m AMSL OR BELOW
580	PERMISSIBLE TOP ELEV. 580 m AMSL OR BELOW	660	PERMISSIBLE TOP ELEV. 660 m AMSL OR BELOW
600	PERMISSIBLE TOP ELEV. 600 m AMSL OR BELOW		
620	PERMISSIBLE TOP ELEV. 620 m AMSL OR BELOW		

### NOTE:

- THIS CCZM HAS BEEN PREPARED IN ACCORDANCE WITH GSR 75(1)E) RULE 5 SUBRULE 1 IN RESPECT OF OBSTACLE LIMITING SURFACES OF INDORE AIRPORT AND DOES NOT INCLUDE JURISDICTION OF DEFENCE AIRPORT. LOCAL AUTHORITIES MAY REFER TO DEFENCE AUTHORITIES IN CASE OF ANY SITE FALLS WITHIN JURISDICTION OF DEFENCE AIRPORTS.
- THE HEIGHT PERMITTED BY CCZM ARE INDICATED ABOVE MEAN SEA LEVEL I.E. AMSL. BUILDING HEIGHT PERMITTED I.E. ABOVE GROUND LEVEL (AGL) WILL BE CALCULATED CCZM HEIGHT (-) THE SITE ELEVATION OF THE PLOT + CCZM HEIGHT - SITE ELEVATION
- FEED BACK ON CCZM SOLICITED FROM AIRPORT, CONCERNED NOC CELL, AERODROME OPERATOR AND LOCAL AUTHORITIES.

APPLICABLE FROM DATE : 11-04-2017

SUBJECT TO REVIEW : AS AND WHEN REQUIRED

VERSION NO...	1.0	DATE...	03-01-2017
PREPARED BY :- (SR. SUPDT.)	(RAJEEV SHARMA)		
CHECKED BY :- (SM. CARTO)	(LAJPAT RAI)		
RECOMMENDED BY :- (JTG(NOC))	(D. BADOLA)		
APPROVED BY :- (GM(NOC))	(S.K.PURWAR)		