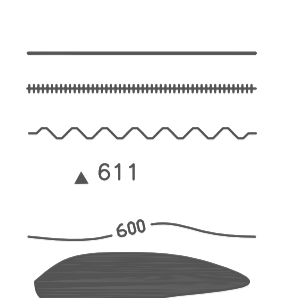


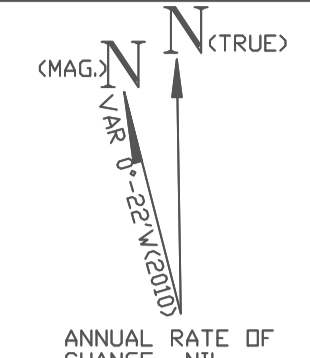
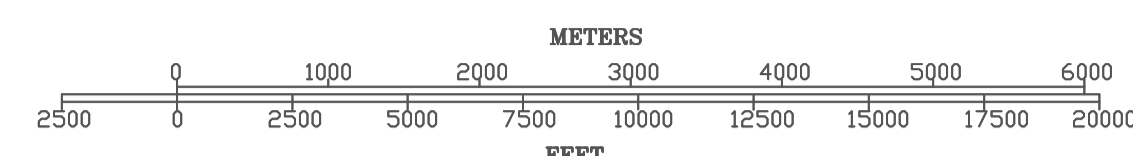
GUWAHATI AIRPORT
LATITUDE 26°06'18"N
LONGITUDE 91°35'08"E
ELEVATION 158FT.(49.15M)
AEROLEV. 162FT.(49.37M)
RWY 02/20 3103Mx45M
PROPOSED RWY 02/20 3870Mx45M

LEGEND
ROAD
RAILWAY LINE
POWER LINE
HEIGHT, TRIANGULATED
CONTOURS
RIVER/TANK/LAKE ETC.



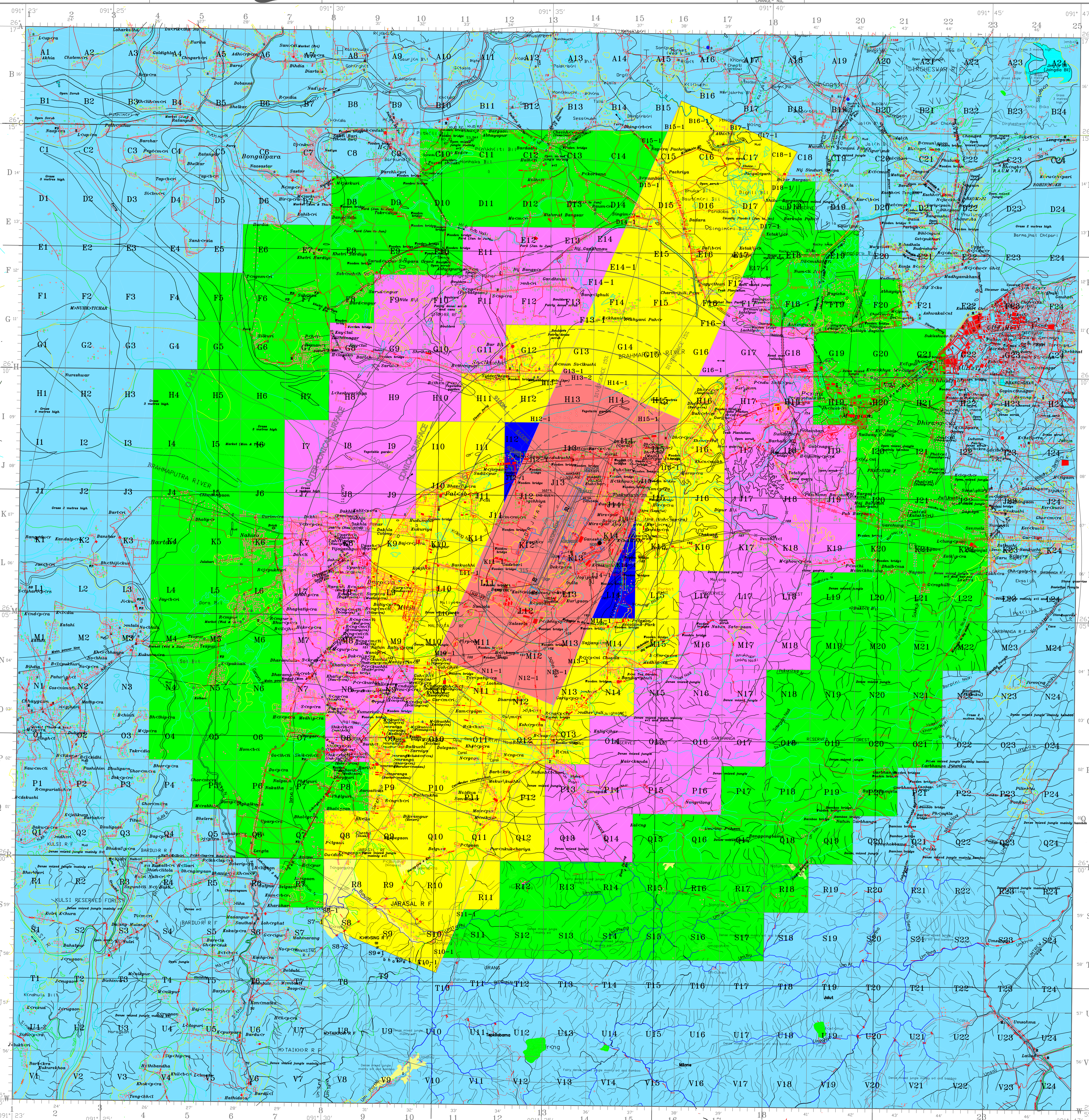
S.NO.	NAV-AIDS	CO-ORDINATES	TOP ELEV.
1.	DVDR	26°06'02.75"N 91°35'52.52"E	189FT
2.	NDB	26°06'31.8"N 91°36'09.6"E	228FT
3.	GP(02)	26°05'47.8"N 91°34'54.7"E	265FT
4.	LLZ(02)	26°07'10.8"N 91°35'29.6"E	179FT
5.	LD/DM	26°02'16.8"N 91°33'12.7"E	219FT
6.	ASR/MSSR	26°06'35.8"N 91°35'19.7"E	219FT

SCALE 1:50000



GUWAHATI COLOUR CODING ZONING MAP

1. GEOGRAPHICAL CO-ORDINATES ARE IN WGS-84 SYSTEM.
2. ALL ELEVATIONS, CONTOURS AND DIMENSIONS ARE IN METERS.



COLOUR LEGEND

	NOC TO BE OBTAINED FROM AAI		PERMISSIBLE TOP ELEV. 109M AMSL OR BELOW.
	PERMISSIBLE TOP ELEV. 79M AMSL OR BELOW.		PERMISSIBLE TOP ELEV. 129M AMSL OR BELOW.
	PERMISSIBLE TOP ELEV. 89M AMSL OR BELOW.		PERMISSIBLE TOP ELEV. 149M AMSL OR BELOW.

NOTE:

- THE PROPOSED SITE OF THE BUILDING/STRUCTURE LIES WITH IN THE JURISDICTION OF ANY DEFENCE AIRPORT. NOC FOR HEIGHT CLEARANCE SHALL ALSO BE OBTAINED FROM THE CONCERNED DEFENCE AUTHORITY.
- THE HEIGHT PERMITTED BY CCZM ARE INDICATED ABOVE MEAN SEE LEVEL i.e. AMSL. BUILDING HEIGHT PERMITTED i.e. ABOVE GROUND LEVEL (AGL) WILL BE CALCULATED CCZM HEIGHT (-) THE SITE ELEV. OF THE PLOT = CCZM HEIGHT-SITE ELEVATION
- FEED BACK ON CCZM SOLICITED FROM AIRPORT, CONCERNED CELL, AERODROME OPERATOR AND LOCAL AUTHORITY.

APPLICABLE FROM DATE: 01.03.2017
SUBJECT TO REVIEW : AS AND WHEN REQUIRED.

VERSION No.:	13	DATE:	13-12-2016
PREPARED BY...	(SR. SUPD)	(MUKESH)	
CHECKED BY...	SR.MANAGER(CARTO)	(LAPAT RAI)	
RECOMMENDED BY...	JT.GM(NOC)	(D. BADOLA)	
APPROVED BY...	GM(NOC)	(S.K.PURWAR)	