

LUCKNOW AIRPORT

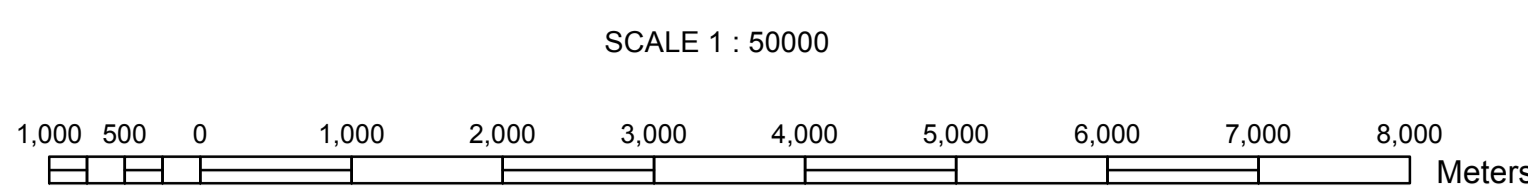
LATITUDE 26° 45' 42.67" N
 LONGITUDE 080° 53' 00.34" E
 ARP ELEV. 122.15m(401 ft.)
 AERODROME ELEV. 123.54m(405 ft.)
 RWY 09/27 3656m x 45m
 (2742m+914m(prop.))

LIST OF NAV AIDS

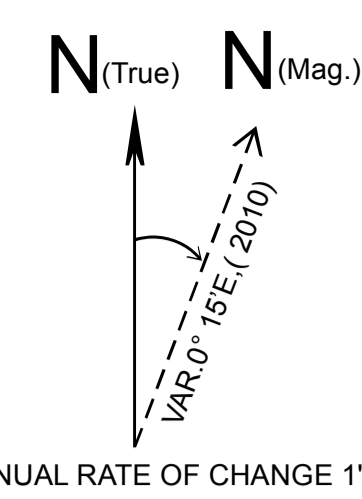
S.No.	NAV AIDS	CO-ORDINATES
1.	DVOR	26° 45' 30.933" N 080° 53' 39.982" E
2.	GP 27	26° 45' 42.706" N 080° 53' 59.322" E
3.	LLZ 27	26° 45' 37.129" N 080° 52' 21.232" E

Legend

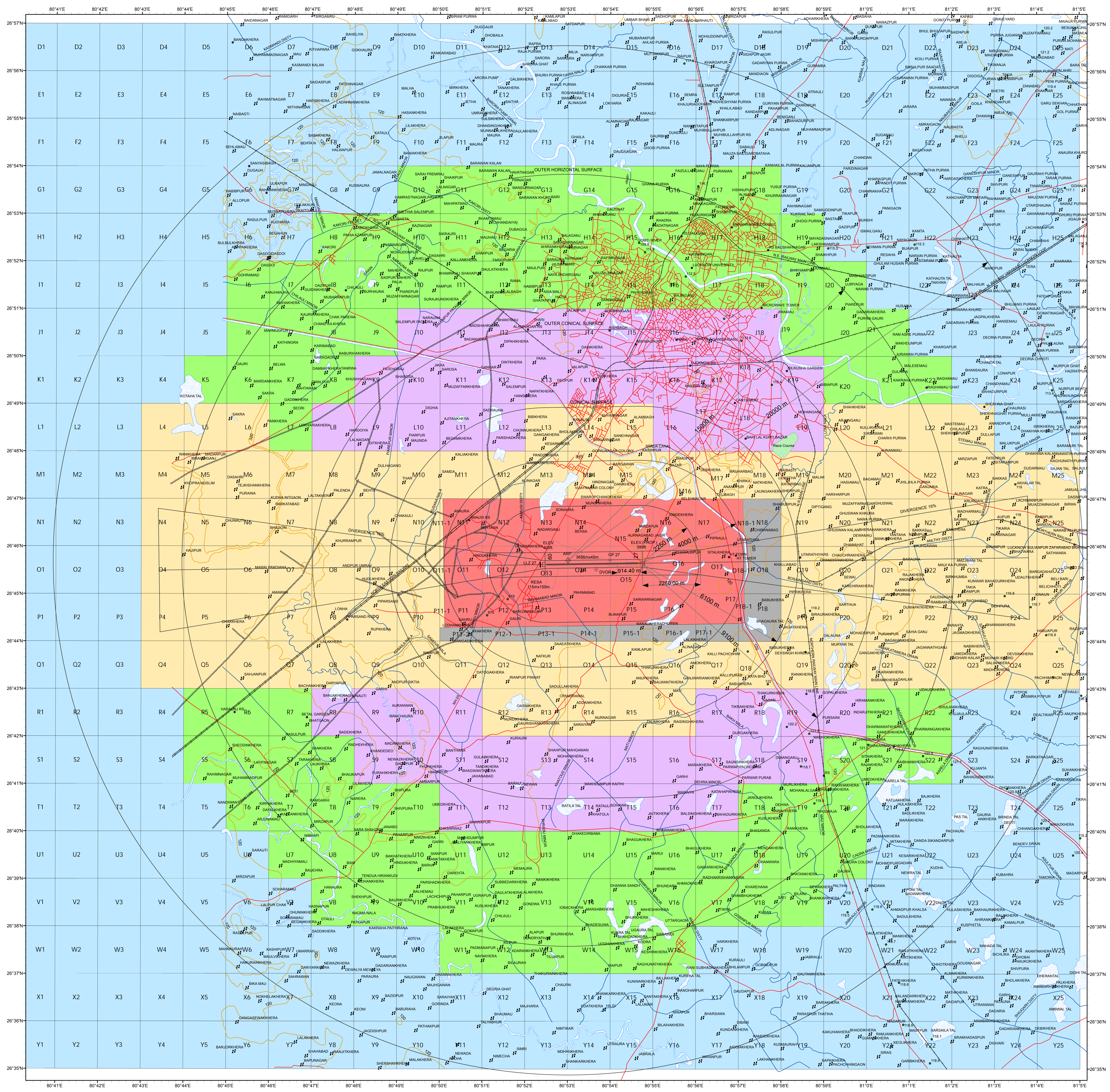
- Village
- Road
- RailwayLine
- PowerLine
- Drain
- Contour
- WaterBodies



ALL GEOGRAPHICAL COORDINATES ARE IN WGS-84
 ALL ELEV., CONTOURS, DIMENSIONS ARE IN METRES.



COLOUR CODED ZONING MAP OF LUCKNOW AIRPORT



COLOUR LEGEND

- 0 NOC TO BE OBTAINED FROM AAI
- 180 PERMISSIBLE TOP ELEV. 180 m AMSL OR BELOW
- 140 PERMISSIBLE TOP ELEV. 140 m AMSL OR BELOW
- 200 PERMISSIBLE TOP ELEV. 200 m AMSL OR BELOW
- 160 PERMISSIBLE TOP ELEV. 160 m AMSL OR BELOW
- 220 PERMISSIBLE TOP ELEV. 220 m AMSL OR BELOW

NOTE:

- THIS CCZM HAS BEEN PREPARED IN ACCORDANCE WITH GSR 751(E) RULE 5 SUBRULE 1 IN RESPECT OF OBSTACLE LIMITING SURFACES OF LUCKNOW AIRPORT AND DOES NOT INCLUDE JURISDICTION OF DEFENCE AIRPORT LOCAL AUTHORITIES MAY REFER TO DEFENCE AUTHORITIES IN CASE OF ANY SITE FALLS WITHIN JURISDICTION OF DEFENCE AIRPORTS.
- THE HEIGHT PERMITTED BY CCZM ARE INDICATED ABOVE MEAN SEA LEVEL i.e. AMSL. BUILDING HEIGHT PERMITTED i.e. ABOVE GROUND LEVEL (AGL) WILL BE CALCULATED CCZM HEIGHT (-) THE SITE ELEVATION OF THE PLOT + CCZM HEIGHT. SITE ELEVATION
- FEED BACK ON CCZM SOLICITED FROM AIRPORT, CONCERNED NOC CELL, AERODROME OPERATOR AND LOCAL AUTHORITIES.

APPLICABLE FROM DATE : 03-01-2017

SUBJECT TO REVIEW : AS AND WHEN REQUIRED

VERSION NO. : 1.2	DATE : 28-12-2016
PREPARED BY :- (SR. SUPDT)	(RAJEEV SHARMA)
CHECKED BY :- (SM. CARTO)	(LAJPAT RAI)
RECOMMENDED BY :- (J.T.GM(NOC))	(D. BADOLA)
APPROVED BY :- (GM(NOC))	(S.K. PURWAR)