

RANCHI AIRPORT

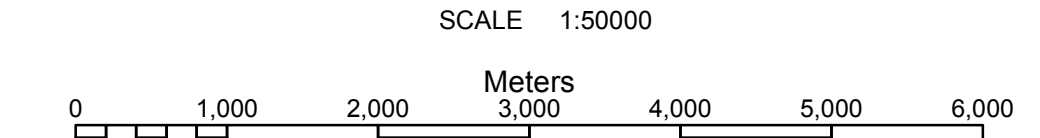
LATITUDE	23°18'51"N
LONGITUDE	85°19'18"E
AERO ELEVATION	655 M
ELEVATION	646 M
RWY 09/27(EXISTING)	2713Mx45M
RWY 09/27(PROP)	3620Mx45M

LIST OF NAV AIDS AT RANCHI AIRPORT

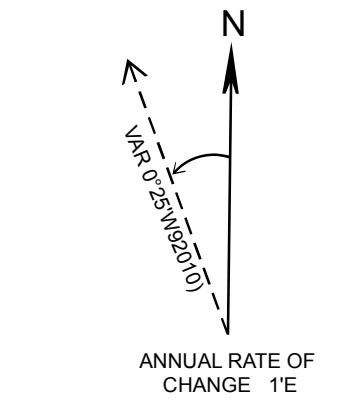
S.NO.	NAV AIDS	CO ORDINATES	TOP ELEVATIONS
1.	NDB	23°19'01.3"N 85°19'18.8"E	666 M
3.	LLZ	23°19'27.88"N 85°18'35.56"E	666M
2.	GP	23°18'32.90"N 85°19'49.79"E	658M
4.	DVOR	23°18'31.37"N 85°19'35.8"E	651 M

LEGEND

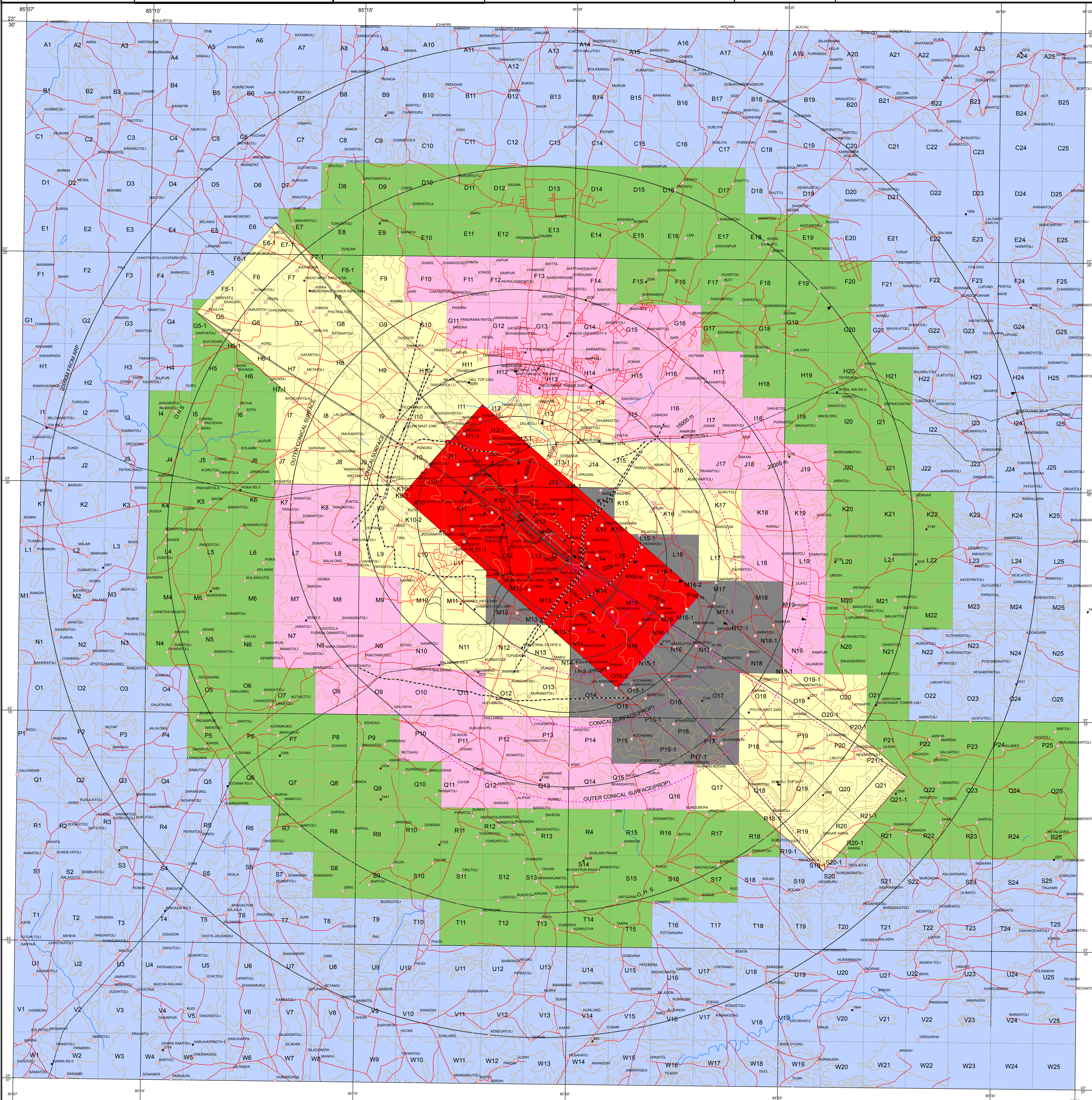
---	CONTOURS
---	POWER LINE
---	RAILWAY LINE
---	ROAD
---	TELEPHONE LINE
---	RIVER/TANKLAKE/ETC.



ALL GEOGRAPHICAL COORDINATES ARE IN WGS-1984  
ALL ELEVATIONS CONTOURS IN FEET AND DIMENSIONS ARE IN METERS.



COLOR CODED ZONING MAP OF RANCHI



**COLOUR LEGEND**

Red	NOC TO BE OBTAINED FROM AAI
Yellow	PERMISSIBLE TOPELEV. 715M AMSL OR BELOW
Green	PERMISSIBLE TOPELEV. 735M AMSL OR BELOW
Blue	PERMISSIBLE TOPELEV. 695M AMSL OR BELOW
Light Blue	PERMISSIBLE TOPELEV. 745M AMSL OR BELOW

NOTES:-  
1. THIS CCZM HAS BEEN PREPARED IN ACCORDANCE WITH GSR 751(E) RULE 5 SUB RULE 1 IN RESPECT OF OBSTACLE LIMITING SURFACES OF RANCHI AIRPORT AND DOES NOT INCLUDE JURISDICTION OF DEFENCE AIRPORTS. LOCAL AUTHORITIES MAY REFER TO DEFENCE AUTHORITIES IN CASE ANY SITE FALLS WITHIN JURISDICTION OF DEFENCE AIRPORTS.  
2. THE HEIGHT PERMITTED BY CCZM ARE INDICATED ABOVE MEAN SEA LEVEL (i.e. AMSL BUILDING HEIGHT PERMITTED I.E. ABOVE GROUND LEVEL (AGA) WILL BE CALCULATED CCZM HEIGHT (i) THE SITE ELEV. OF THE PLOT + CCZM HEIGHT - SITE ELEVATION.  
3. FEED BACK ON CCZM SOLICITED FROM AIRPORT , CONCERNED NOC CELL, AERODROME OPERATER AND LOCAL AUTHORITIES.

APPLICABLE FROM DATE 16 MARCH 2017  
(SUBJECT TO REVIEW AS AND WHEN REQUIRED)

VERSION	2.0	DATE	15-03-2017
PREPARED BY	(S.R. RAJPUT)	(S.HARIN)	
CHECKED BY	(S.M. MANJUNATH)	(L.PATIL RAJ)	
RECOMMENDED BY	(J.T. GANOC)	(D. BARDOLAI)	
APPROVED BY	(S.K. PURWAR)		