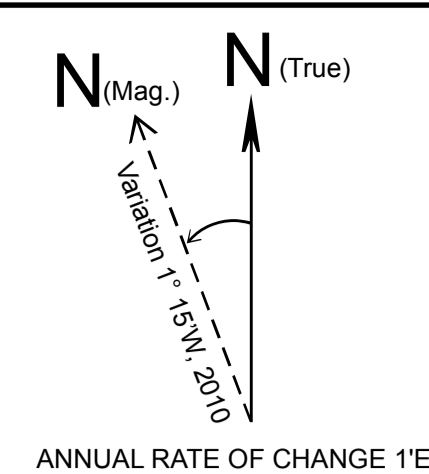
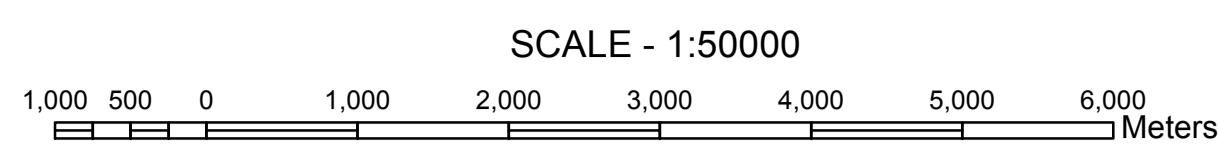


VIJAYAWADA AIRPORT

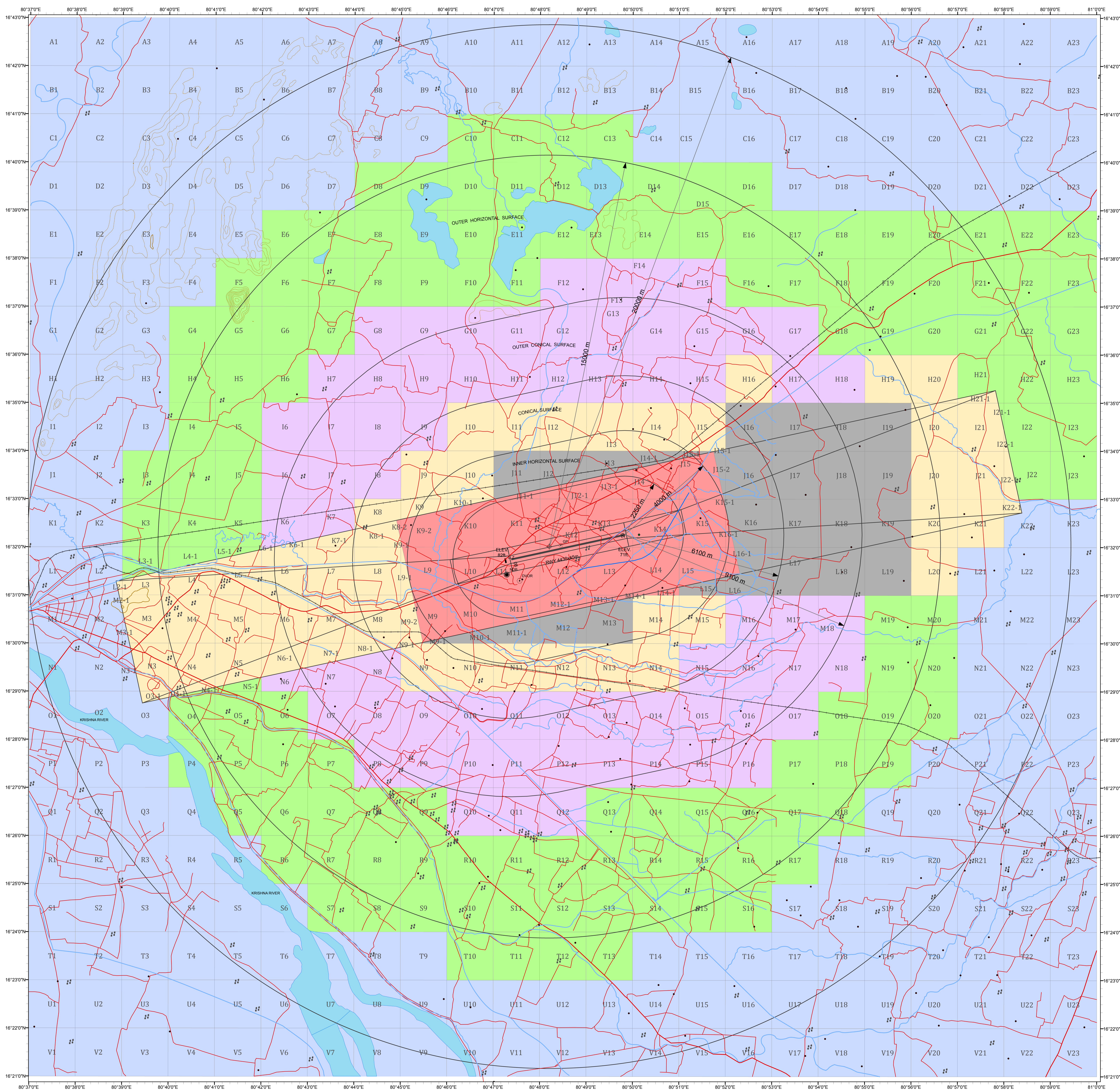
LATITUDE 16° 32' 00.95" N
 LONGITUDE 80° 48' 11.86" E
 ARP ELEV. 22.86m (75 ft)
 RWY 08/26 4430m x 45m
 AERODROME ELEV. 25.3 m (83 ft)

LIST OF NAV AIDS

LLZ 16° 31' 43.153" N 80° 47' 15.521" E
 GP 16° 32' 02.295" N 80° 48' 27.034" E
 DVOR 16° 31' 17.894" N 80° 47' 33.909" E
 NDB 16° 31' 25.163" N 80° 47' 17.114" E
 DVOR (P) 16° 32' 15.800" N 80° 50' 08.200" E



CCZM OF VIJAYAWADA AIRPORT



COLOUR LEGEND

- 0 NOC TO BE OBTAINED FROM AAI
- 45 PERMISSIBLE TOP ELEV. 45 m AMSL OR BELOW
- 65 PERMISSIBLE TOP ELEV. 65 m AMSL OR BELOW
- 85 PERMISSIBLE TOP ELEV. 85 m AMSL OR BELOW
- 105 PERMISSIBLE TOP ELEV. 105 m AMSL OR BELOW
- 125 PERMISSIBLE TOP ELEV. 125 m AMSL OR BELOW

Legend

- # Village
- River_Prop
- River_1
- Road_2
- Road_1
- Railway_Line
- River_2
- coutour100m

NOTE:

1. THIS CCZM HAS BEEN PREPARED IN ACCORDANCE WITH GSR 75(1) RULE 5 SUBRULE 1 IN RESPECT OF OBSTACLE LIMITING SURFACES OF VIJAYAWADA AIRPORT AND DOES NOT INCLUDE JURISDICTION OF DEFENCE AIRPORT LOCAL AUTHORITIES. MAY REFER TO DEFENCE AUTHORITIES IN CASE OF ANY SITE FALLS WITHIN JURISDICTION OF DEFENCE AIRPORTS.
2. THE HEIGHT PERMITTED BY CCZM ARE INDICATED ABOVE MEAN SEA LEVEL i.e. AMSL. BUILDING HEIGHT PERMITTED i.e. ABOVE GROUND LEVEL (AGL) WILL BE CALCULATED CCZM HEIGHT (+) THE SITE ELEVATION OF THE PLOT = CCZM HEIGHT - SITE ELEVATION
3. FEED BACK ON CCZM SOLICITED FROM AIRPORT , CONCERNED NOC CELL, AERODROME OPERATOR AND LOCAL AUTHORITIES.

APPLICABLE FROM DATE : 01-03-2017
 SUBJECT TO REVIEW AS AND WHEN REQUIRED

VERSION NO... 1.0	DATE... 09-12-2016
PREPARED BY :- (SR. SUPDT.)	(VED PARKASH)
CHECKED BY :- (SM. CARTO)	(LAJPAT RAI)
RECOMMENDED BY :- (JT.GM(NOC))	(D. BADOLA)
APPROVED BY :- (GM(NOC))	(S.K. PURWAR)