

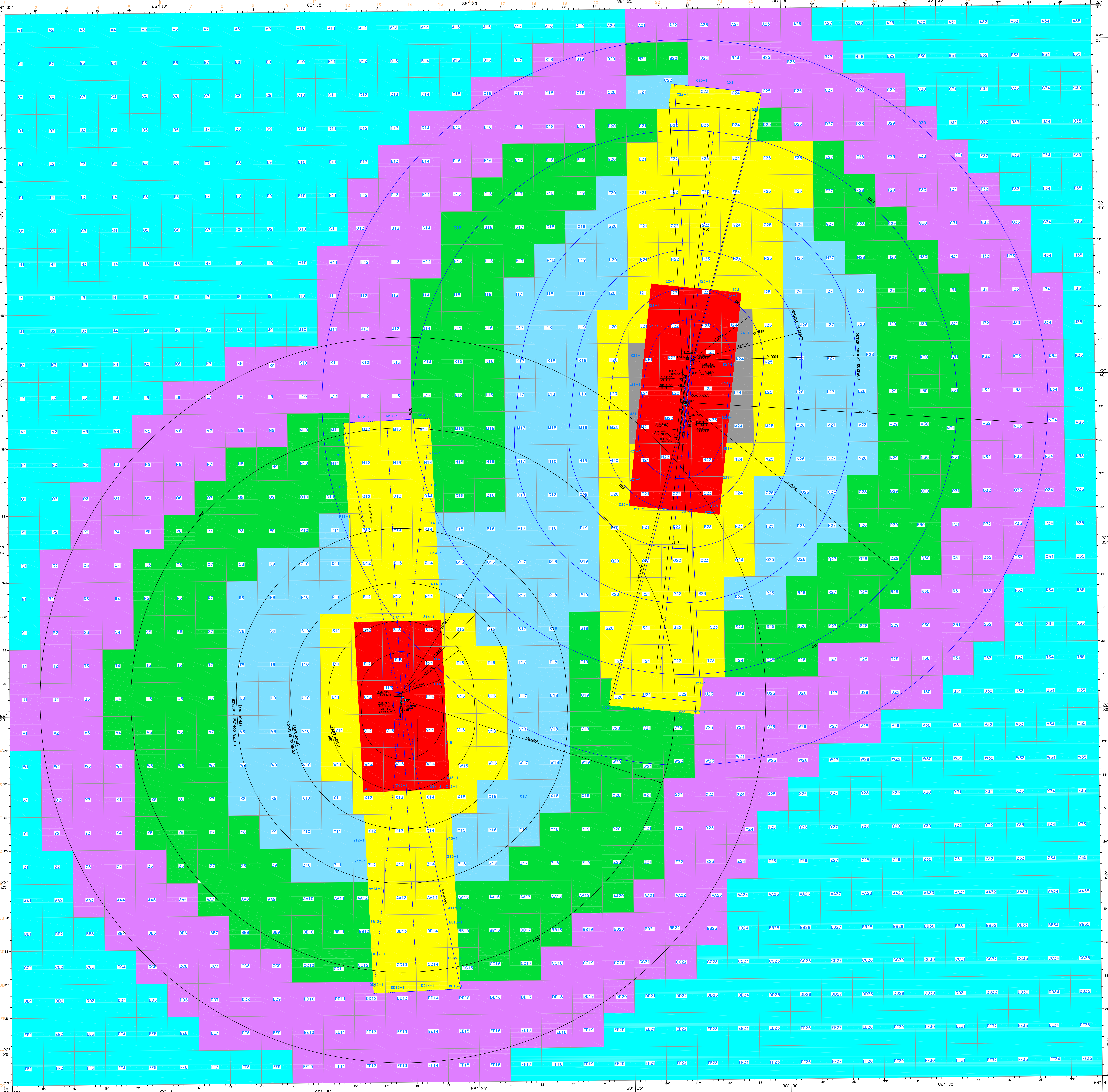
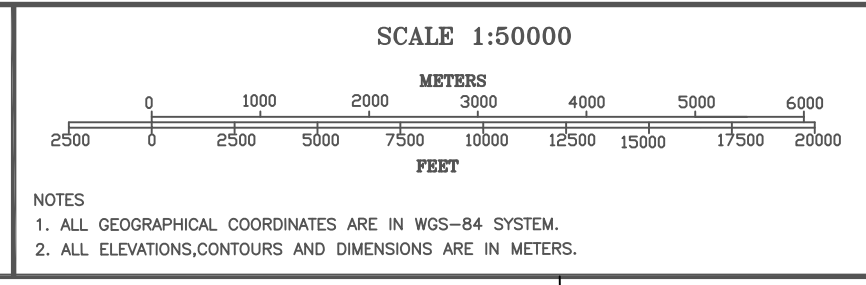
DATUM WGS-84 (REVISED)

KOLKATA & BEHALA COLOUR CODING ZONING MAP (IN GRID FORM)

KOLKATA AIRPORT	28° 39' 14.27" N 88° 26' 48.21" E ASPH. ELEV. 17FT(5.396) AMSL ACRODROME ELEV. 3633M(45M) RWY 08L/19R 3271M(45M)	BEHALA AIRPORT	28°30'25.4"N 88°17'38.6"E ELEVATION 18113.20M RWY 18/36 927M(30M) PRD. RWY7 1371x30 (364+927+280)
------------------------	--	-----------------------	---

LEGEND	ROAD RAILWAY LINE POWER LINE CONTOURS RIVER/TANK/LAKE ETC.
---------------	--

LIST OF NAV. AIDS	
1. DME	28°49'30.7N 88°26'32.2E 324M(47F)
2. DME	28°49'30.7N 88°26'32.2E 324M(47F)
3. ILS	28°49'30.7N 88°26'32.2E 324M(47F)
4. ILS	28°49'30.7N 88°26'32.2E 324M(47F)
5. ILS	28°49'30.7N 88°26'32.2E 324M(47F)
6. ILS	28°49'30.7N 88°26'32.2E 324M(47F)
7. MSL	28°41'16.7N 88°29'54"E 324M(47F)
8. ILS	28°41'16.7N 88°29'54"E 324M(47F)
9. MSL	28°39'43.27N 88°26'48.21"E 324M(47F)
10. MSL	28°39'43.27N 88°26'48.21"E 324M(47F)
11. ILS	28°41'16.7N 88°29'54"E 324M(47F)
12. ILS	28°41'16.7N 88°29'54"E 324M(47F)
13. ILS	28°41'16.7N 88°29'54"E 324M(47F)
14. ILS	28°41'16.7N 88°29'54"E 324M(47F)
15. ILS	28°41'16.7N 88°29'54"E 324M(47F)



COLOUR LEGEND	NOG TO BE OBTAINED FROM AEA	PERMISSIBLE TOP ELEV. 45M AMSL OR BELOW	PERMISSIBLE TOP ELEV. 60M AMSL OR BELOW	PERMISSIBLE TOP ELEV. 125M AMSL OR BELOW
	PERMISSIBLE TOP ELEV. 70M AMSL OR BELOW	PERMISSIBLE TOP ELEV. 85M AMSL OR BELOW	PERMISSIBLE TOP ELEV. 105M AMSL OR BELOW	

NOTE:

- THIS COZM WAS PREPARED IN ACCORDANCE WITH ICAO NOTIFICATION NO. QDR 7101/16 IN RESPECT OF OBSTACLE LIMITING SURFACES OF KOLKATA AND BEHALA AIRPORT AND DOES NOT INCLUDE JURISDICTION OF OFFICE AIRPORT, LOCAL AUTHORITY OR AEA TO REFUSE, AUTHORITIES IN CASE OF ANY SITE FALLS WITHIN JURISDICTION OF OFFICE AIRPORTS.
- NOG IS NOT REQUIRED FOR AIR FOR BUILDINGS / STRUCTURES PROPOSED TO BE CONSTRUCTED UP TO THE HEIGHT PERMITTED UNDER THIS COZM REFER TO GRID TABLE (COL. 1 & 2).
- THE HEIGHT PERMITTED BY COZM ARE INDICATED ABOVE MEAN SEA LEVEL (M.S.L.) AMSL. BUILDING HEIGHT PERMITTED IN ABOVE GRID TABLE SHALL BE CALCULATED COZM HEIGHT TO THE SITE ELEVATION OF THE PLOT (= COZM HEIGHT - SITE ELEVATION).
- FEED BACK OR COZM SOLICITED FROM AIRPORT, CONCERNED NOC CELL, AIRBORNE OPERATOR AND LOCAL AUTHORITY.

VERSION NO. 1.1	DATE: 23.01.2018
PREPARED BY: (MURARI)	
CHECKED BY: (SARAT K)	
APPROVED BY: (PRAMOD)	
APPROVED BY: (R. K. SINGHA)	

APPLICABLE FROM DATE: 23.01.2018
SUBJECT TO REVIEW AS AND WHEN REQUIRED