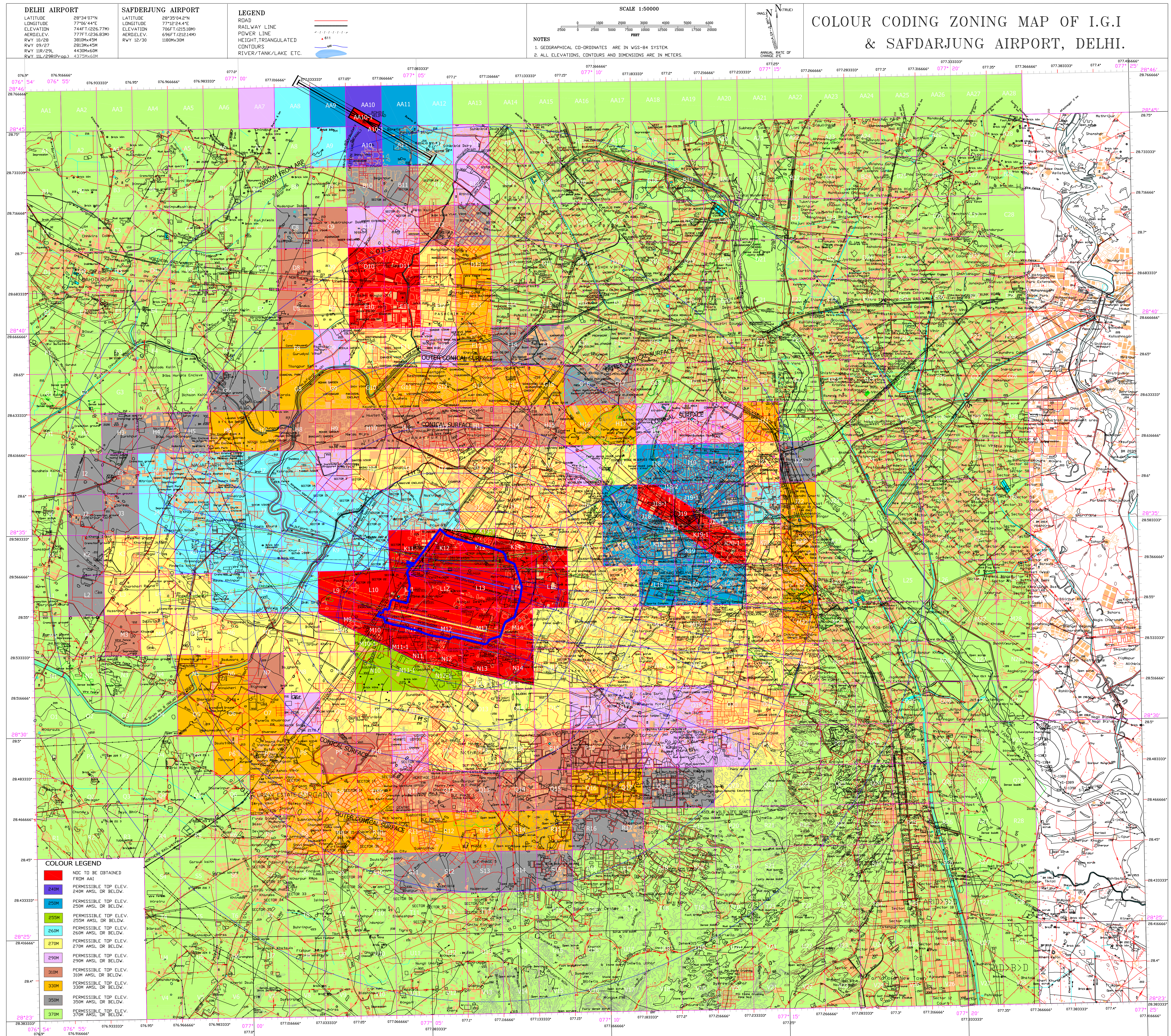


DATUM WGS-84

COLOUR CODING ZONING MAP OF I.G.I & SAFDARJUNG AIRPORT, DELHI.



DELHI AIRPORT		SAFDARJUNG AIRPORT	
LATITUDE	28°34'07"N	LATITUDE	28°35'04.2"N
LONGITUDE	77°06'44"E	LONGITUDE	77°12'24.4"E
ELEVATION	744F(226.30)	ELEVATION	756F(232.10)
AREAELEV.	777F(236.83M)	AREAELEV.	696F(212.14M)
RWY 10/28	3810Mx45M	RWY 12/30	1180Mx30M
RWY 09/27	2810Mx45M		
RWY 11R/29L	4430Mx60M		
RWY 11L/29R(Prop.)	4375Mx60M		

LEGEND	
ROAD	—————
RAILWAY LINE	—————
POWER LINE	—————
HEIGHT, TRIANGULATED	▲
CONTOURS	~~~~~
RIVER/TANK/LAKE ETC.	~~~~~

SCALE 1:50000	
0	2500
5000	7500
10000	12500
15000	17500
20000	25000

NOTES	
1.	GEOGRAPHICAL CO-ORDINATES ARE IN WGS-84 SYSTEM.
2.	ALL ELEVATIONS, CONTOURS AND DIMENSIONS ARE IN METERS.

DELHI AIRPORT	
LATITUDE	28°34'07"N
LONGITUDE	77°06'44"E
ELEVATION	744F(226.30)
AREAELEV.	777F(236.83M)
RWY 10/28	3810Mx45M
RWY 09/27	2810Mx45M
RWY 11R/29L	4430Mx60M
RWY 11L/29R(Prop.)	4375Mx60M

SAFDARJUNG AIRPORT	
LATITUDE	28°35'04.2"N
LONGITUDE	77°12'24.4"E
ELEVATION	756F(232.10)
AREAELEV.	696F(212.14M)
RWY 12/30	1180Mx30M

LEGEND	
ROAD	—————
RAILWAY LINE	—————
POWER LINE	—————
HEIGHT, TRIANGULATED	▲
CONTOURS	~~~~~
RIVER/TANK/LAKE ETC.	~~~~~

SCALE 1:50000	
0	2500
5000	7500
10000	12500
15000	17500
20000	25000

NOTES	
1.	GEOGRAPHICAL CO-ORDINATES ARE IN WGS-84 SYSTEM.
2.	ALL ELEVATIONS, CONTOURS AND DIMENSIONS ARE IN METERS.

DELHI AIRPORT	
LATITUDE	28°34'07"N
LONGITUDE	77°06'44"E
ELEVATION	744F(226.30)
AREAELEV.	777F(236.83M)
RWY 10/28	3810Mx45M
RWY 09/27	2810Mx45M
RWY 11R/29L	4430Mx60M
RWY 11L/29R(Prop.)	4375Mx60M

COLOUR LEGEND	
RED	NOT TO BE OBTAINED FROM AAI
240M	PERMISSIBLE TOP ELEV. 240M AMSL OR BELOW
250M	PERMISSIBLE TOP ELEV. 250M AMSL OR BELOW
255M	PERMISSIBLE TOP ELEV. 255M AMSL OR BELOW
260M	PERMISSIBLE TOP ELEV. 260M AMSL OR BELOW
270M	PERMISSIBLE TOP ELEV. 270M AMSL OR BELOW
290M	PERMISSIBLE TOP ELEV. 290M AMSL OR BELOW
310M	PERMISSIBLE TOP ELEV. 310M AMSL OR BELOW
320M	PERMISSIBLE TOP ELEV. 320M AMSL OR BELOW
350M	PERMISSIBLE TOP ELEV. 350M AMSL OR BELOW
370M	PERMISSIBLE TOP ELEV. 370M AMSL OR BELOW

LIST OF NAV AIDS					
S.NO.	NAV AIDS	CO-ORDINATES	TOP ELEV.	S.NO.	NAV AIDS
1.	DVDR	28°32'31.85"N 77°04'49.65"E	729FT	7.	SMR
2.	ASR/MSSR	28°32'25.9"N 77°05'08.9"E	734FT	8.	NDB(DME74)
3.	GRD(SR)	28°32'38.7"N 77°04'20.9"E	738FT	9.	NDB(DME20)
4.	LLZ(LR)	28°32'13.4"N 77°06'45.4"E	779FT	10.	ASR/MSSR
5.	GRD(SL)	28°32'25.9"N 77°05'27.2"E	748FT	11.	ASR/MSSR
6.	LLZ(29L)	28°32'52.4"N 77°09'43.7"E	789FT	12.	DVDR
				13.	GRD(SR)
				14.	LLZ(28)
				15.	GRD(SL)
				16.	LLZ(27)
				17.	GRD(SL)
				18.	LLZ(10)
				19.	GRD(SR)
				20.	LLZ(09)
				21.	MH
				22.	DM

S.NO.	NAV AIDS	CO-ORDINATES	TOP ELEV.	S.NO.	NAV AIDS	CO-ORDINATES	TOP ELEV.
13.	GRD(SR)	28°33'36.9"N 77°07'09.7"E	729FT	19.	GRD(SR)	28°34'12.6"N 77°05'28.9"E	729FT
14.	LLZ(28)	28°33'16.6"N 76°59'56.4"E	729FT	20.	LLZ(09)	28°34'15.7"N 77°07'06.4"E	729FT
15.	GRD(SL)	28°33'02.2"N 77°08'01.1"E	729FT	21.	MH	28°33'02.2"N 77°08'01.1"E	729FT
16.	LLZ(27)	28°34'14.4"N 77°06'16.5"E	729FT	22.	DM	28°32'07.2"N 77°11'56.6"E	729FT
17.	GRD(SL)	28°34'02.5"N 77°05'16.4"E	729FT				
18.	LLZ(10)	28°33'28.2"N 77°07'32.1"E	729FT				

NOTES	
1.	PERMISSIBLE DISTANCE OF RED ZONE OUTSIDE ICAO AIRPORT'S BOUNDARY ENCLAVING APPROACH AND TRANSITION SURFACE
2.	APPROXIMATELY 50M TOWARDS NORTHERN SIDE
3.	APPROXIMATELY 100M TOWARDS SOUTHERN SIDE DUE TO BARRAGE NEAR BOUNDARY
4.	THIS COZM HAS BEEN PREPARED IN ACCORDANCE WITH ICAO PANS-OPS (PART 1) & ICAO DOC 8168 (PART 2) & ICAO DOC 8168 (PART 3)
5.	NOT INCLUDING ASSOCIATION OF OFFENCE AIRPORT. LOCAL AUTHORITIES MAY REFER TO OFFICE AUTHORITIES IN CASE OF ANY SITE WITHIN ASSOCIATION OF OFFENCE AIRPORTS.
6.	THE HEIGHT PERMITTED BY COZM ARE INDICATED ABOVE FROM SEA LEVEL (MSL). ABOVE GROUND LEVEL (AGL) HEIGHT OF BUILDING/ STRUCTURE PERMISSIBLE = COZM HEIGHT - SITE ELEVATION.

AMMENDMENTS			
NO.	DATE	APPROVED BY	CHECKED BY
1.	18/05/2015		
2.	13/05/2016		

AMMENDMENTS			
NO.	DATE	APPROVED BY	CHECKED BY
1.	18/05/2015		
2.	13/05/2016		

AMMENDMENTS			
NO.	DATE	APPROVED BY	CHECKED BY
1.	18/05/2015		
2.	13/05/2016		

AMMENDMENTS			
NO.	DATE	APPROVED BY	CHECKED BY
1.	18/05/2015		
2.	13/05/2016		

AMMENDMENTS			
NO.	DATE	APPROVED BY	CHECKED BY
1.	18/05/2015		
2.	13/05/2016		

AMMENDMENTS			
NO.	DATE	APPROVED BY	CHECKED BY
1.	18/05/2015		
2.	13/05/2016		

AMMENDMENTS			
NO.	DATE	APPROVED BY	CHECKED BY
1.	18/05/2015		
2.	13/05/2016		